



LITTLE PENGUIN FACT SHEET

How much do little penguins eat?

Around 25% of their body weight (around 250 g) per day.



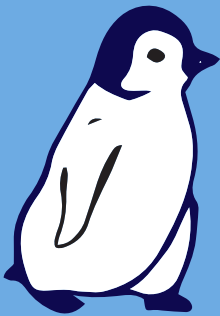
How much do little penguins weigh?

Around 1000 g or 1 kg.



Which parent looks after the chicks?

Both male and female Little Penguins look after the eggs and chicks



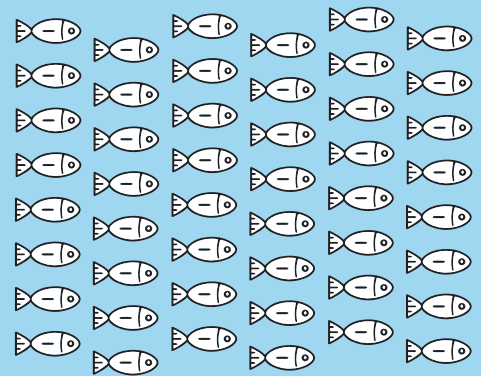
How old are they before they can go to sea?

Little penguins fledge (leave the nest) around 8 weeks after hatching



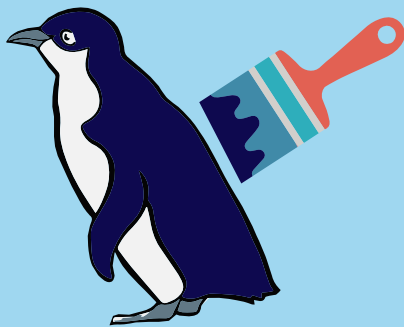
What do little penguins eat?

Predominantly small fish like anchovy and pilchards.



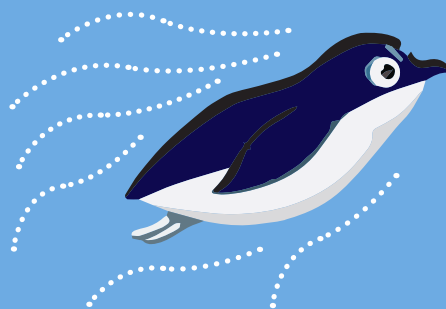
What colour are little penguins?

The navy blue back and white front of the Little Penguin is for camouflage



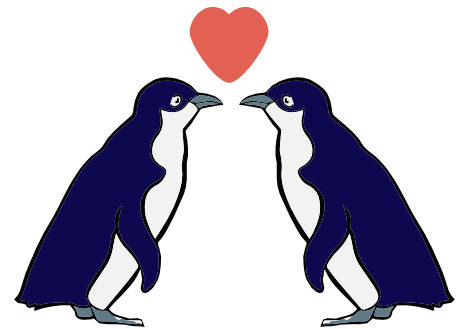
How fast do they swim?

Little penguins can flap their flippers up to 5 times per second. They swim at an average speed of 2-4 km per hour but the fastest one on record was 6.4 km per hour which is faster than most humans!



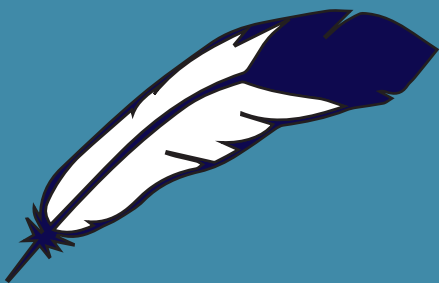
Do they mate for life?

Not necessarily. The little penguin colony has around a 20% divorce rate, but this can be up to 50% depending on the colony and season.



How many feathers to little penguins have?

Around 10000.



How deep do they dive?

The scientific name of the little penguin is *Eudyptula minor*. This means good little diver. They are fantastic in the water and usually dive 10 – 30 m. They dive between 200 and 13000 times per day.



How tall are little penguins?

They are the smallest penguin in the world. They are approximately 33 cm tall.

